

# DC NOISE

## Demographic change: New Opportunities in Shrinking Europe

Monitoring Demographic Change

Johan Surkyn



# Monitoring exercises: overview & keywords

- University of Abertay Dundee (UAD): visualisation tools, communication and sensitizing
- Provinces of East- and West-Flanders: tailored empirical analyses, project monitoring, longitudinal monitoring
- Twente region: focus on strategic decision making, longitudinal data, (statistic downloads)
- Bremen region: social, demographic and spatial monitoring in urban context



# University of Abertay Dundee: Context

- Population decline since the early 1970s
- Significant double ageing: 8% decrease in the population under age 15, and 11% increase in the number of people aged 75 and over since 1991
- Tackling population decline: retaining young working people and graduates in the city
- One strategy: regeneration of the Dundee Central Waterfront, part of masterplan for the redevelopment of Dundee



# University of Abertay Dundee: Methodology

- Development of a baseline indicator set for monitoring sustainable urban regeneration
- Selection of indicators based on literature, interviews, document analysis, and reviewing their appropriateness to the Central Waterfront
- Indicators cover: Population & Economics, Environment, and Social

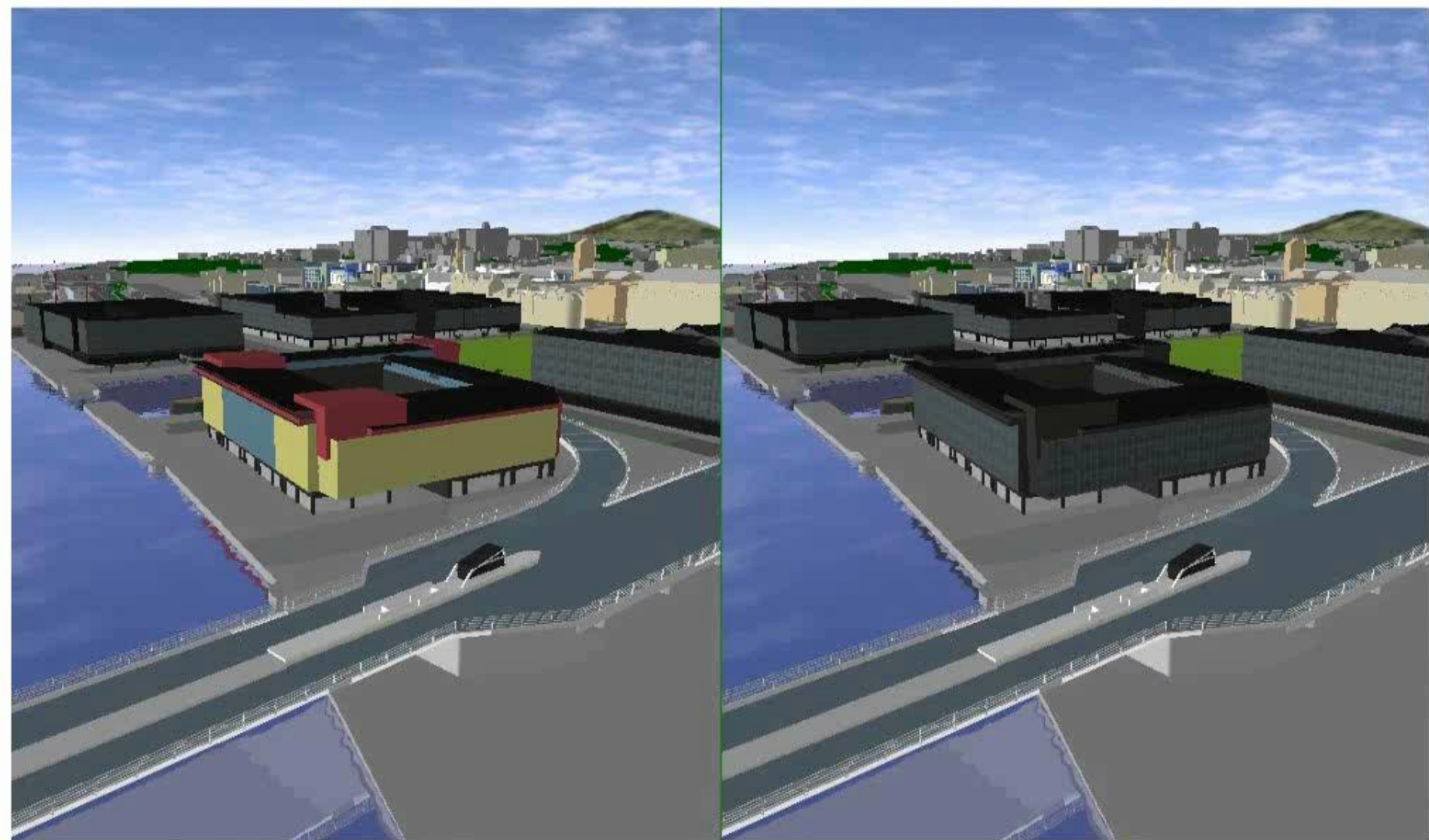


## Example: demographic benchmark indicators

Definition	Units	Baseline Data	Target
Population retention	Population number	142,170	Up
Population 0-15 years	%	16.6	To match national
Population 16-64 years	%	65.3	To match national
Population 65+ years	%	18.1	To match national



Splitscreen used to allow comparison of different scenarios



Residential Option

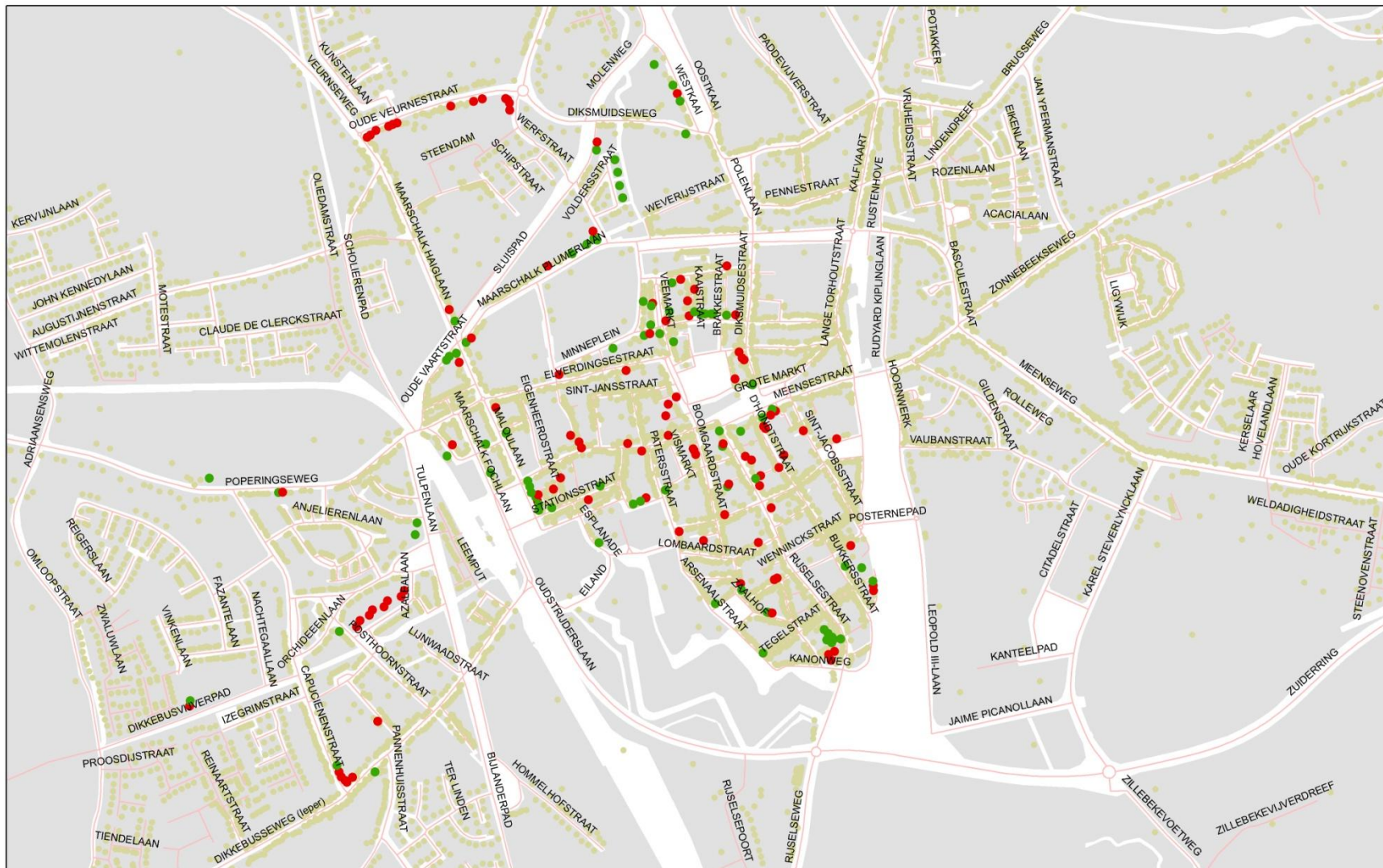
Retail Option



## East and West Flanders: Context

- Population expected to keep increasing
- Regional variation:
  - Coastal region: tourism, rapid ageing, housing prices
  - Westhoek: brain-drain, historic ageing, housing quality
  - City of Ghent: no ageing whatsoever!, students and young professionals replace births, middle aged and elderly leave
- Life-long independent living: adapting the family home, or moving to adapted quarters? Ypres example





## nieuwbouwappartementen leper-Centrum

### ouderen / AANTAL

- 0% - 50%
- 50,1% - 100%

### kadastergegevens:

192 appartementen  
eindjaar 2007 en 2008

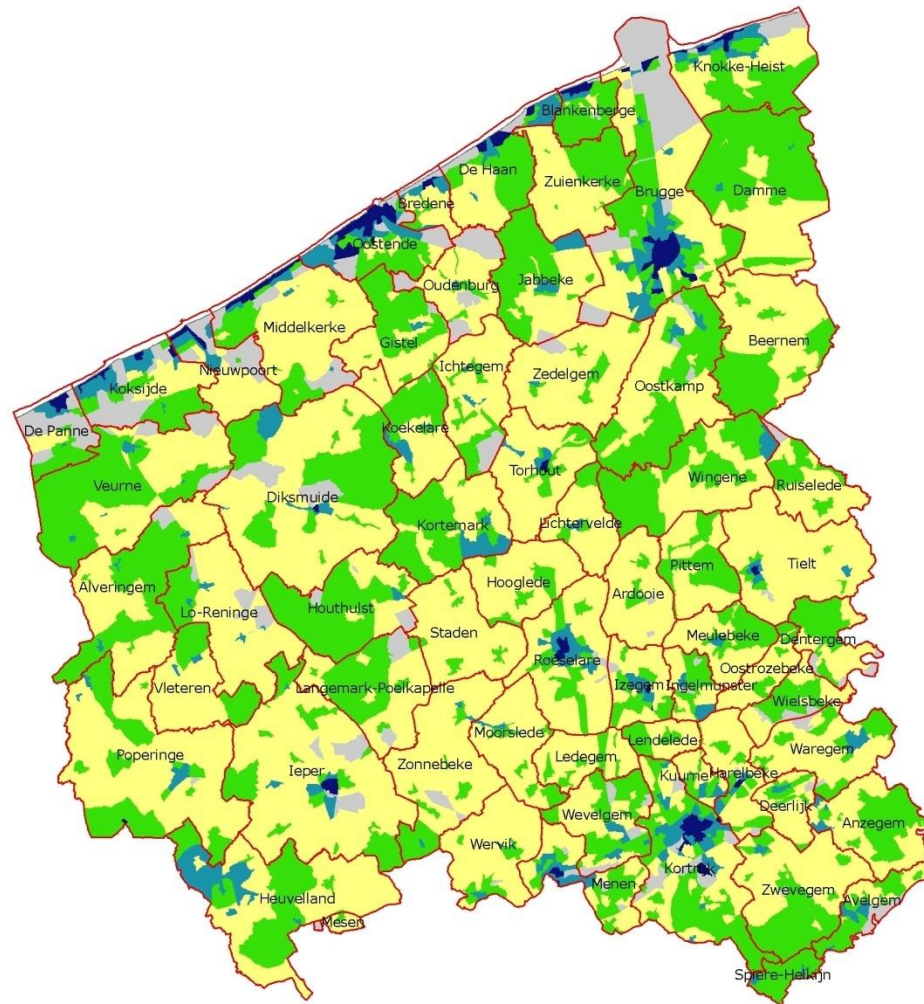
<b>bewoning 2009:</b>	
totale bevolking	1625
55-64 jaar	242
65-79 jaar	390
80+ jaar	178
aandeel 55+	50%



# Monitoring demographic change: Single person households

Opgemaakt ikv DC Noise project

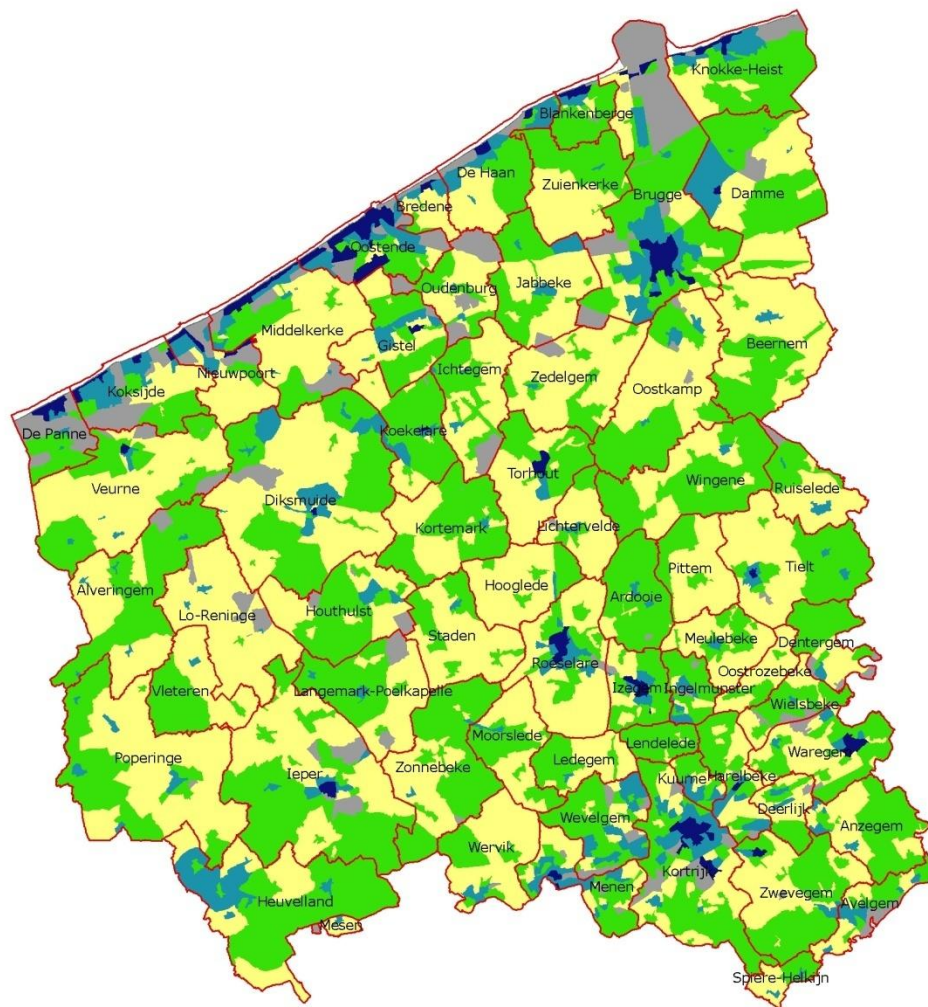
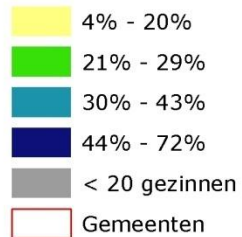
**alleenstaanden 2002**



Bron: rijksregister 01.01.2002

Opgemaakt ikv DC Noise project

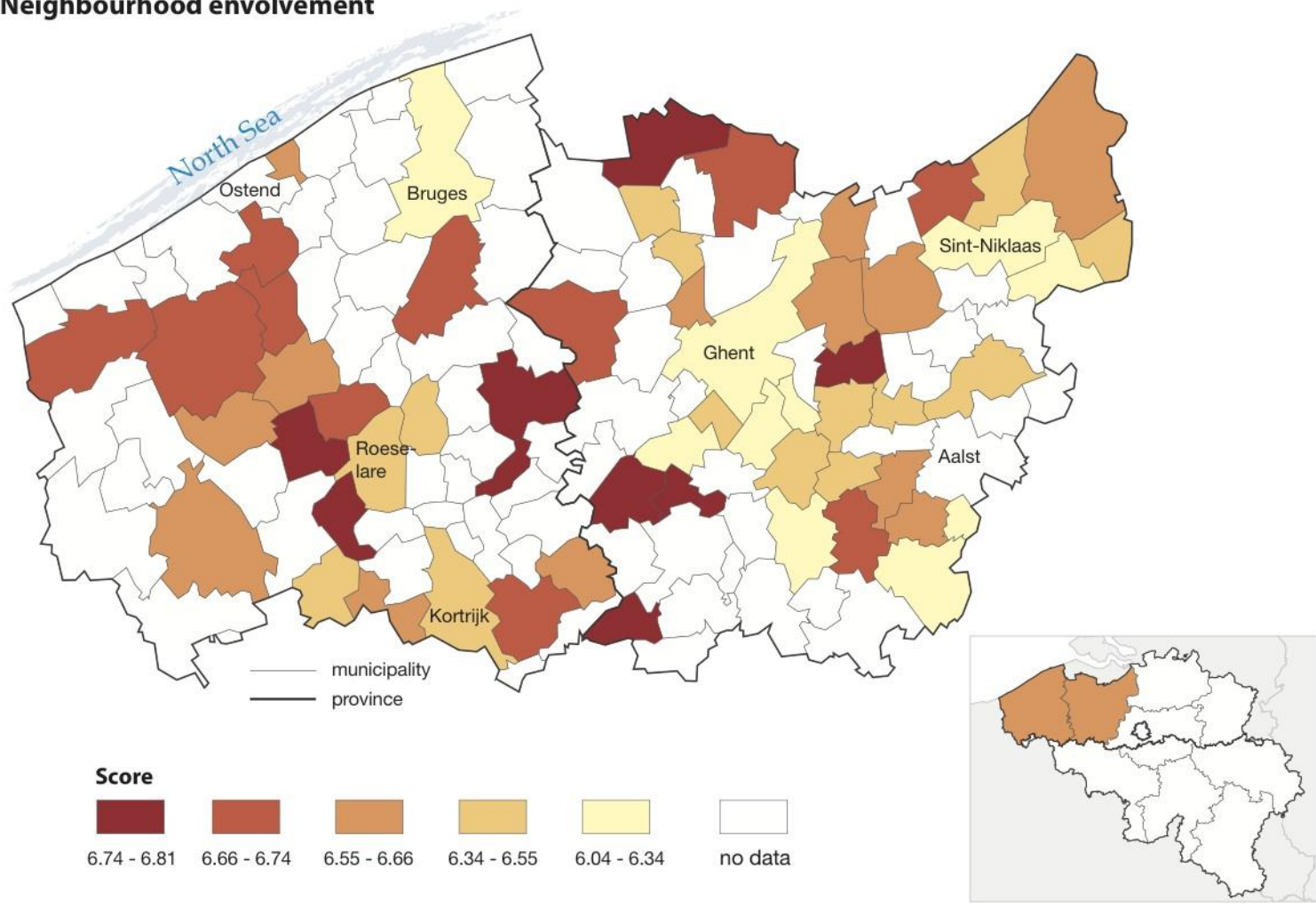
**alleenstaanden 2009**



Bron: rijksregister 01.01.2009

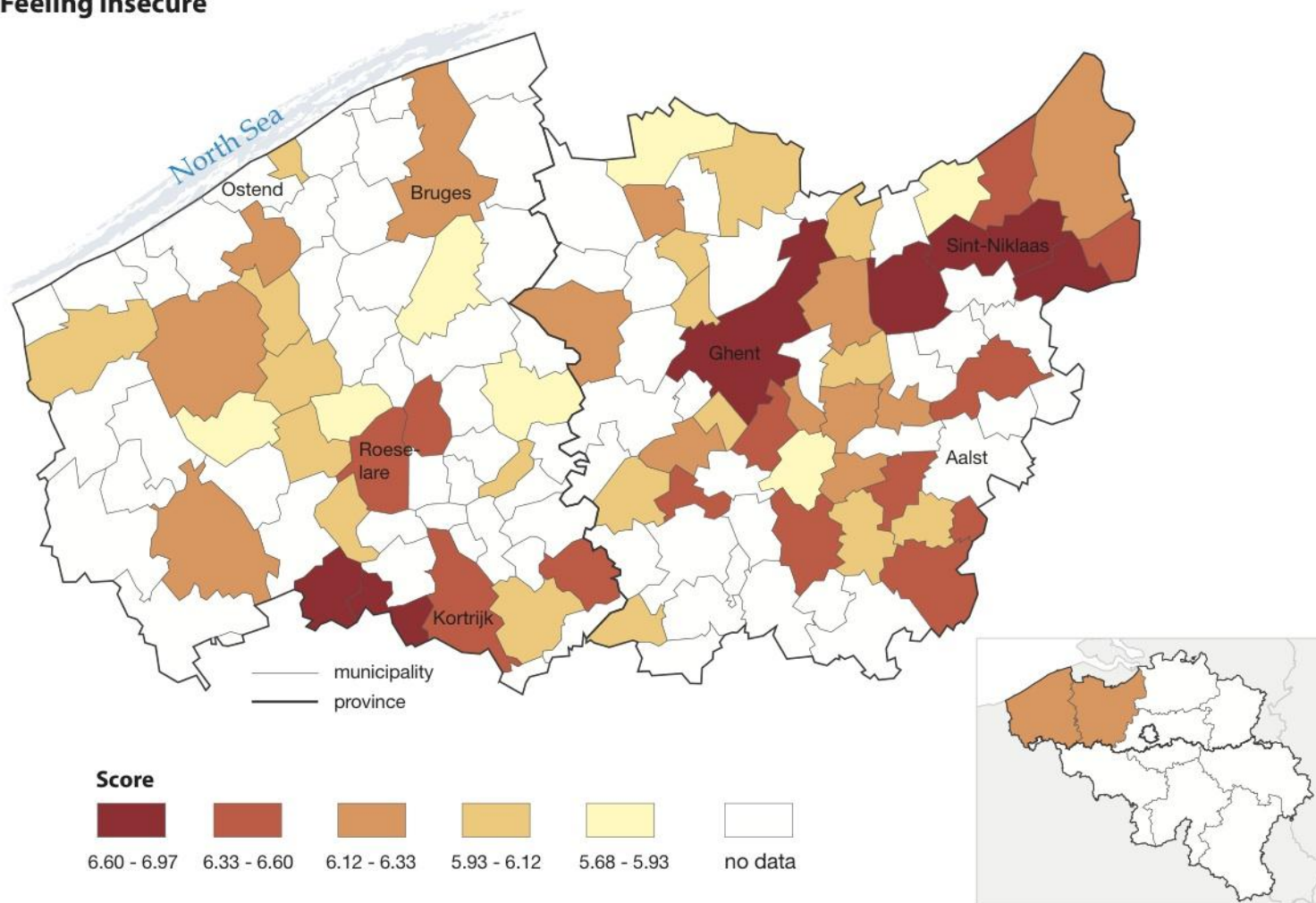
# Elderly care needs study

## Neighbourhood involvement





## Feeling insecure



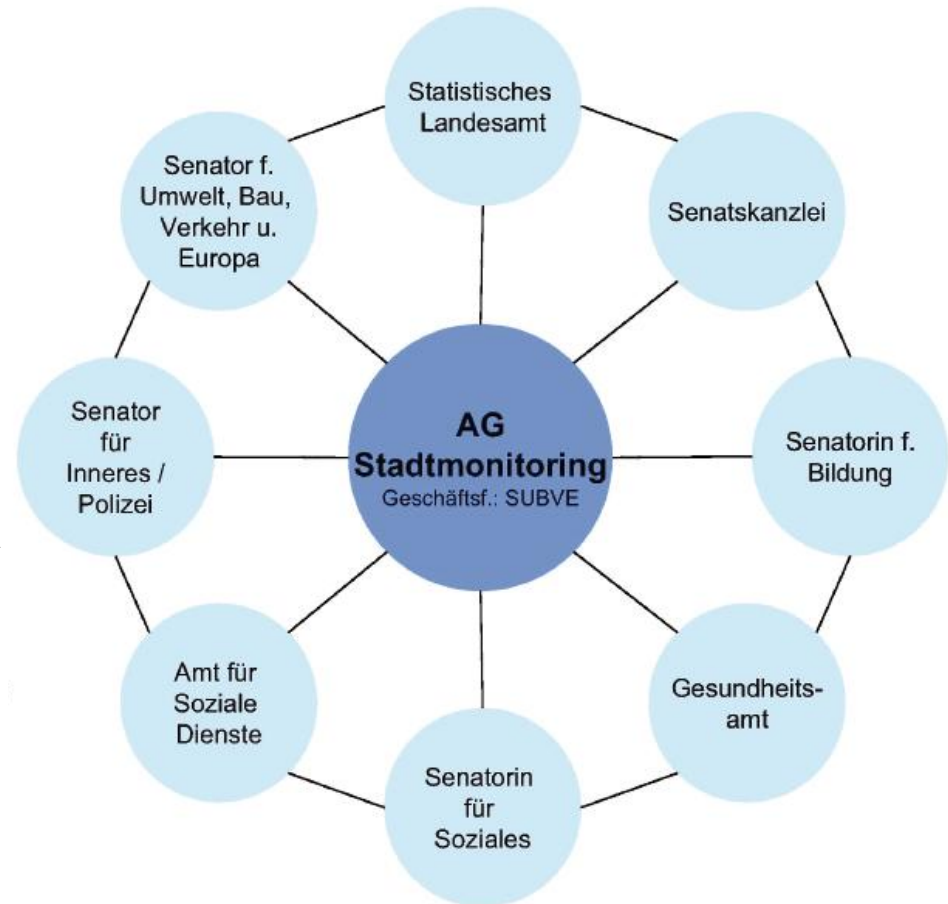


# Bremen Kommunalverbund Monitoring System



# Realisation

- Network “Stadtmonitoring”
- Not only statistic approach
- No single datawarehouse
- Data: statistic agency,
- and departments in network



## Fields of activity

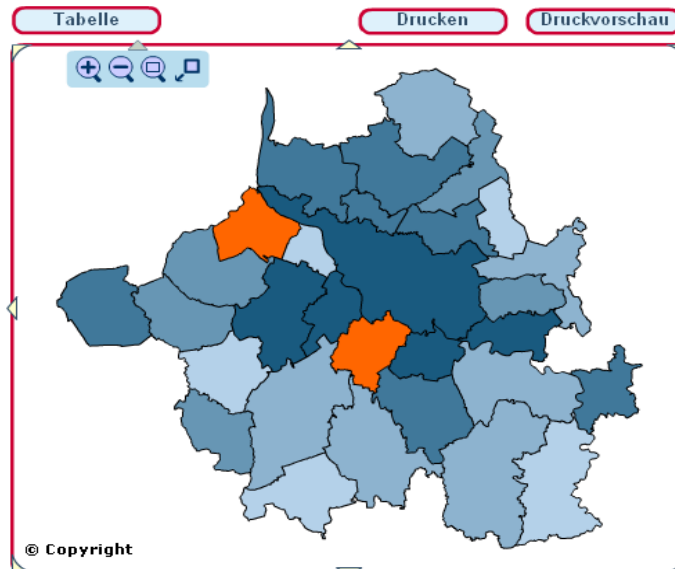
- Analysis of trends (demography, poverty, crime rate etc.)
- Location planning (schools, kindergarten, homes for the elderly.)
- Preparatory studies for urban redevelopment areas
- Common service for policy advice



# DC NOISE Monitoring

Prognose Einwohnerentwicklung als absolute Differenz zu 2007 >> Differenz Anzahl Einwohner ab 80 Jahre und älter >> 2020

Daten	Leer	Filter
Namen ▲	Daten	
Berne	113	
Bremen	12.449	
Bruchhausen-Vilsen	322	
Delmenhorst	2.070	
Dötlingen	172	
Ganderkesee	867	
Grafschaft Hoya	220	
Grasberg	138	
Hambergen	238	
Harpstedt	285	
Hatten	327	
Hude (Oldenburg)	375	
Lernwerder	230	
Lilienthal	724	
Osterholz-Scharmbeck	690	
Ottersberg	300	
Oyten	368	
Ritterhude	469	
Schwanewede	615	
Stuhr	1.377	
Syke	636	
Thedinghausen	277	



Legende Hilfe

Gemeinden Kommunalverb.

Quantile
113,0 - 230,0
230,1 - 322,0
322,1 - 428,0
428,1 - 724,0
724,1 - 12.449,0

Der Indikator prognostiziert die Differenz der absoluten Einwohnerzahl 2007 zu den Folgejahren im Alter ab 80 Jahre und älter.

kommunalverbund  
niedersachsen  
bremen e.V.

Gefördert durch:

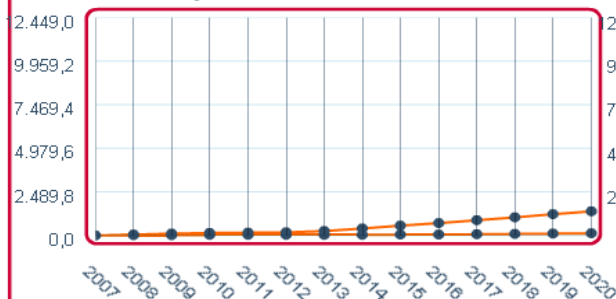


The Interreg IVB  
North Sea Region  
Programme

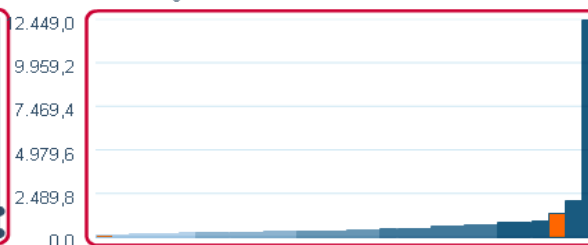


**METROPOLE  
NORDWEST**  
Die Frischköpfe

Zeitreiendiagramm



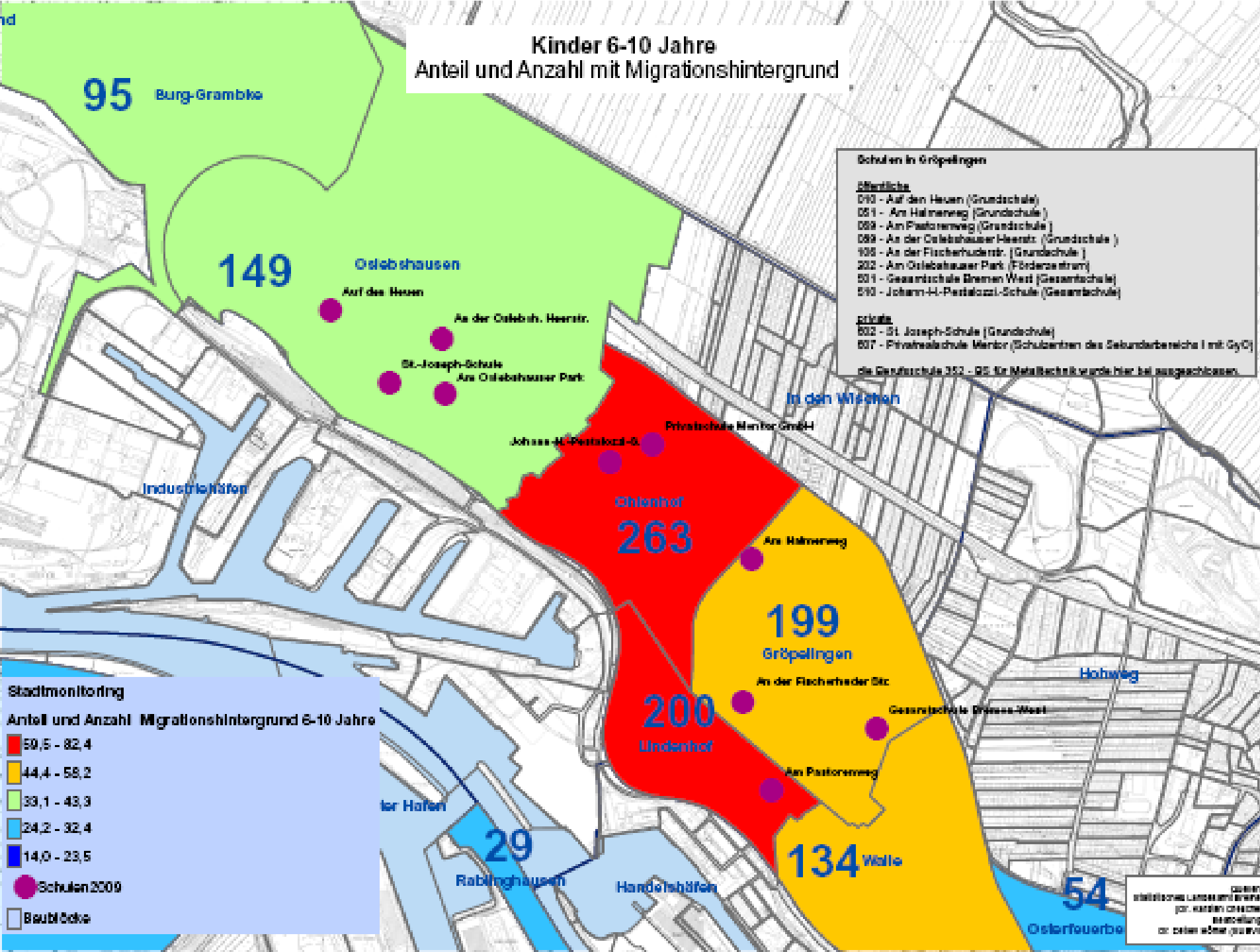
Säulendiagramm







# Kinder 6-10 Jahre Anteil und Anzahl mit Migrationshintergrund







## Region of Twente

- 2010 - 2020 deminishing growth and aging population
- 2020 – 2040 population decline

Serious impact, examples:

- Labor market: size and quality workforce
- Housing: changing demands in a shrinking market
- Services: more (diverse) services for the elderly
- Transport and mobility

Active policy to anticipate, supported by monitoring system



## Region of Twente

### Twente Project 'Good Monitoring, Better Policies':

- **Monitoring Demographic Change as part of a broad monitoring system voor the Twente region**
- **Goals:**
  - Improve strategic decision making.
  - Support integrated and interactive policy development
  - Boost for coöperation in the Twente region
- **DC NOISE partnership as catalyst and source of inspiration**





# Monitoring for strategic decision making

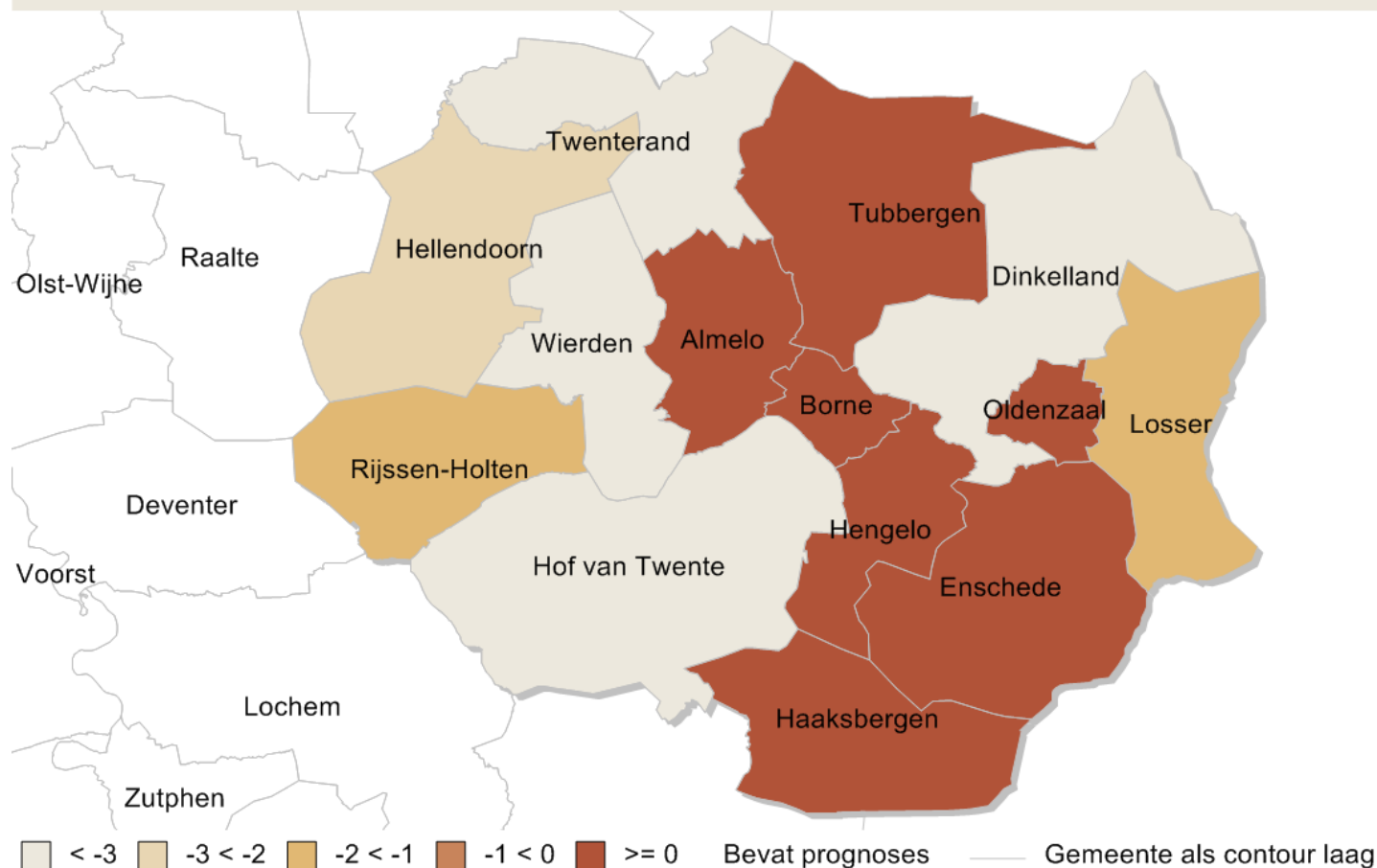


- **Twente Index:**

- Yearly report on the state of the Twente Region:
  - Demographic Change
  - Economic Growth, Employment, Productivity and Innovation
  - Livability, Housing and Culture
- Coöperation government, chamber of commerce and universities
- DC NOISE effort for Twente:  
*strengthen monitoring of the consequences of Demographic Change on housing, labour market, services, etc.*



**Bevolking 1 januari [%], 2020 - Gemeenten uit COROP-gebied Twente, Groeicijfers (%) t.o.v. 2006**



Bron: ABF Research - Primos prognose 2007



# Monitoring for strategic decision making

- **Latest developments monitoring Twente:**
  - Operational requirements monitoring system ready
  - Search for indicators typical for envisaging impacts of DC
  - Emphasis:
    - Interpretation monitoring results on DC
    - Sharing information with regional partners
    - Encourage public debate about DC
    - Co-operation with partners in Twente: inspired by the network approach of Bremen region
  - Ready by the end of 2010

